

Neolithic/Paleolithic Vocabulary

Ard: A simple tool used to break up the ground for planting crops.



Ax: A simple tool that was used to split and shape wood.



Cuneiform: A system of tools used in ancient writing



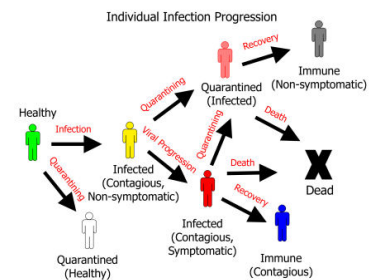
Domesticate: The process of taming animals for use in farming



Famine: A period when food is not available and people begin to starve



Infectious Disease: A type of sickness that can be spread easily to and among a population



Mesopotamia-An Area in the Middle East between the Tigris and Euphrates rivers where the ancient Sumerian civilization was located



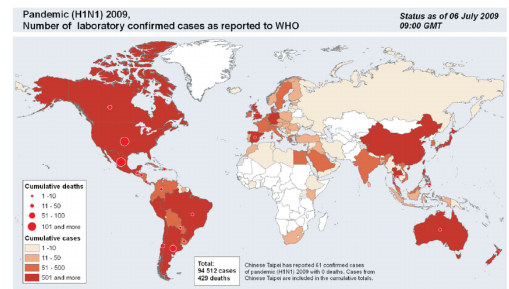
Neolithic-Period of human history beginning 12, 500 years ago. This was a time when humans began using advanced stone tools and developed agriculture



Paleolithic- Period of human history beginning 2.5 million years ago. A time when humans used simple tools and lived as hunters and gatherers.



Pandemic-A large outbreak of an infectious disease that affects many people over a great distance.



Sickle-Simple tool with a handle and a curved blade used to harvest crops



Sumerian-One of the earliest human civilizations. Located in the Mesopotamia between the Euphrates and the Tigris rivers



